



Planner

Fully integrated well planning

Release Notes

GVERSE Planner 2022.1

© 2001 - 2022 LMKR Holdings. All Rights Reserved.

This publication is copyright protected. No part of this publication may be copied or distributed, transmitted, transcribed, stored in a retrieval system, or translated into any human or computer language, in any form or by any means, electronic, magnetic, manual, or otherwise, or disclosed to third parties without the express written permission of:

LMK Resources Inc. Houston

6051 North Course Drive,

Suite 300,

Houston TX 77072, USA.

Phone: +281-495-5657

FAX: +281-568-7315

Internet:

<http://www.gverse.com/geographix>

Trademark Notice

GVERSE® is a registered trademark of LMKR. WebSteering, Predict3D, Attributes, Connect, Planner, Inversion, Geo+, Geophysics, FieldPlanner, Petrophysics and NOW are trademarks of LMKR.

DecisionSpace, Discovery, GeoGraphix (stylized), GeoGraphix Exploration System, GeoLink, GES, GESXplorer, GMAplus, IsoMap, LeaseMap, LogM, OpenWorks, OpenWorks Well File, PRIZM, SeisVision, XSection, iEnergy are trademarks, registered trademarks or service marks of Landmark Graphics Corporation.

All other trademarks are the property of their respective owners.

Disclaimer

The information contained in this document is subject to change without notice and should not be construed as a commitment by LMKR. We assume no responsibility for any error that may appear in this manual. Some states or jurisdictions do not allow disclaimer of expressed or implied warranties in certain transactions; therefore, this statement may not apply to you.

Contents

- Introduction 1
- What is GVERSE Planner? 1
- Main Features 1
- Benefits 1
- Installing GVERSE Planner 2
- What’s New in GVERSE Planner 2022.1 2
- Third Party Applications..... 3
- International Trade Compliance 4
- Definitions 4
- Contacting GVERSE GeoGraphix Support 5

Introduction

We are pleased to announce the release of GVERSE® Planner 2022.1.

This document provides an introduction to the Planner software features and benefits.

What is GVERSE Planner?

GVERSE Planner is integrated with GeoGraphix®, and is used to plan wells within GeoGraphix/Field Planner modules. It enables integrated well planning giving user the control to plan multiple wells. With the Planner software you can quickly visualize geological surfaces, create surveys and make changes to existing plans by adding target points on the go with the ability to export well plans for drilling. The Planner software is part of the GVERSE application suite (<http://www.gverse.com>).

GVERSE consists of geoscience and engineering solutions focused on workflow optimization and enhancing productivity of teams working on diverse geological and geophysical projects.

Main Features

The main features of the Planner software are as follows:

- Digitize target points and calculate a well survey based on restrictions such as DLS.
- Plan wells in GeoAtlas Field Planning mode, and also in single well planning mode in smartSECTION.
- Anticipate intersections with geologic beds and markers using the Geoprognosis feature.
- Export well trajectory data into a Microsoft Excel sheet.
- Display planned wells in a 3D view.
- Seamlessly transfer data between GeoGraphix and Planner.

Benefits

Using the Planner software, you can benefit from an integrated platform that gives solutions in different well planning modes and scenarios.

- **Increased User Productivity:** When using GeoGraphix, the GVERSE Planner can be used to plan wells by providing flexibility in creating numerous plans.
- **Quick Decision Making:** Digitize target points with the help of geological surfaces by taking DLS constraints into account to make sure that the well is actually drillable.
- **Easy Integration with GeoGraphix:** Save well information directly into the GeoGraphix database without a requirement to import/export.
- **Reduced Costs:** Provides an affordable and comprehensive solution for well planning, saving the user from an incurring monetary loss in the future.
- **Quick Adaptability:** The well survey and GeoPrognosis reports can be generated and exported into a spreadsheet for further use in terms of more accuracy.

Installing GVERSE Planner

GVERSE Planner is installed seamlessly as part of the GeoGraphix installation. For system prerequisites and installation instructions, refer to the GeoGraphix Installation Guide on the GVERSE GeoGraphix Support Portal > Knowledge Center > [Release Notes and Installation Guides](#) page.

What's New in GVERSE Planner 2022.1

The following features have been introduced in this release:

- Introducing Slant Well and S-well planning methods to plan Build-Hold and Build-Hold-Build/Drop trajectories.
- Ability to plan Multi Kick-off trajectories and plan wells with multiple Build-Hold-Build/Drop sections.
- Ability to combine multiple planned sections to compute complex wellbore trajectories.
- Generate Geoprognois reports from drilled and proposed surveys.
- Add new wells from GeoAtlas maps.
- Add Target Points from a GeoAtlas map to compute Wellbore trajectories.
- Import and export target points from GVERSE Planner.
- Enter target points based on XY offsets.

Third Party Applications

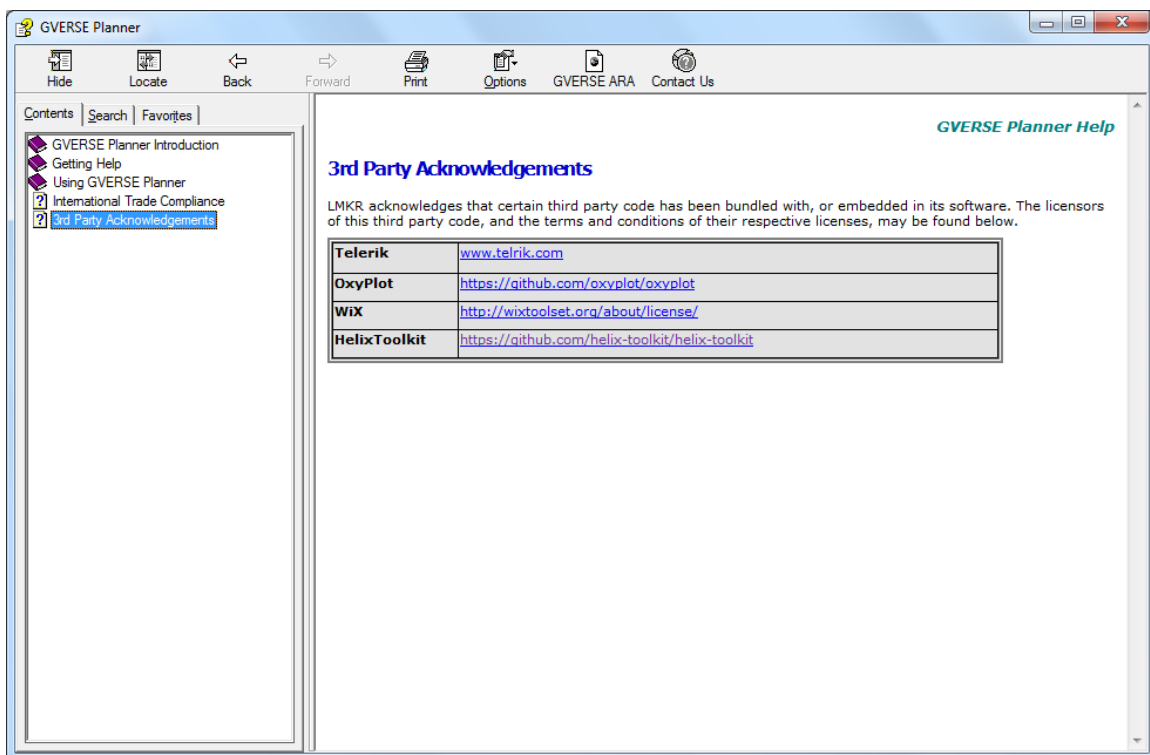
We acknowledge that certain third party code has been bundled with, or embedded in, our software. The licensors of this third party code, and the terms and conditions of their respective licenses, may be found in the Planner help file.

To access the 3rd party license agreements:

1. In the **GVERSE Planner Settings** dialog, **Help** tab, click **Documentation**.

The Help window displays.

2. In the **Contents** pane, locate the **3rd Party Acknowledgements** help topic as shown in the image below.



International Trade Compliance

This application is manufactured or designed using U.S. origin technology and is therefore subject to the export control laws of the United States. Any use or further disposition of such items is subject to U.S. law. Exports from the United States and any re-export thereafter may require a formal export license authorization from the government. If there are doubts about the requirements of the applicable law, it is recommended that the buyer obtain qualified legal advice. These items cannot be used in the design, production, use, or storage of chemical, biological, or nuclear weapons, or missiles of any kind.

The ECCNs provided here (if available) represent our opinion of the correct classification for the product today (based on the original software and/or original hardware). Classifications are subject to change. If you have any questions or need assistance please contact us at support@lmkr.com.

Under the U.S. Export Administration Regulations (EAR), the U.S. Government assigns your organization or client, as exporter/importer of record, responsibility for determining the correct authorization for the item at the time of export/import. Restrictions may apply to shipments based on the products, the customer, or the country of destination, and an export license may be required by the Department of Commerce prior to shipment. The U.S. Bureau of Industry and Security provides a website to assist you with determining the need for a license and with information regarding where to obtain help.

The URL is: <http://www.bis.doc.gov>.

Definitions

ECCN - Export Control Classification Number - The ECCN is an alpha-numeric code, e.g., 3A001, that describes a particular item or type of item, and shows the controls placed on that item. The CCL (Commerce Control List) is divided into ten broad categories, and each category is further subdivided into five product groups. The CCL is available on the EAR Website.

EAR - Export Administration Regulation - The EAR is a set of regulations that are administered by the Bureau of Industry and Security, which is part of the US Commerce Department. In general, the EAR govern whether a person may export a thing from the U.S., re-export the thing from a foreign country, or transfer a thing from one person to another in a foreign country. The EAR apply to physical things (sometimes referred to as "commodities") as well as technology and software.

The EAR number and the License type for this product are included in the table below. Also included is the date the table was last updated.

Product/Component/R5000	EAR Number	License	Last Updated On
GVERSE Planner	EAR99	EAR	11/23/2015

Contacting GVERSE GeoGraphix Support

We are committed to providing the highest level of technical customer support in the industry. With an average tenure of more than thirteen years, our highly trained and experienced staff of technical analysts is comprised of geoscientists, engineers, land professionals, petrophysicists, and system specialists.

Please refer to our Customer Support timings mentioned below to ensure that you have access to our support analysts assigned to your region. When getting in touch with GVERSE GeoGraphix support, please remember that real-time support will not be available during bank holidays or after office hours. If you do get in touch with GVERSE GeoGraphix Support outside of work hours, please leave a voice message with a brief description of the issue that you are facing. Your voice message will be used to automatically create a support case for you. This will enable our analysts to attend to your issue and provide you with a resolution as soon as possible

North and South America	Europe, Middle East & Africa
<p>Monday – Friday 8 am-6 pm CST* Toll Free (US/Canada) : +1 855 449 5657</p> <p>Colombia: +57 1381 4908</p> <p>United States: +1 303 295 0020</p> <p>Canada: +1 587 233 4004</p> <p><i>*Excluding bank holidays</i></p>	<p>UK: Monday - Friday 8 am – 5 pm* +44 20 3608 8042</p> <p>UAE: Sunday - Thursday (Dubai GMT+4) 8 am – 5 pm* +971 4 3727 999</p> <p><i>*Excluding bank holidays</i></p>
Asia Pacific & Australian Continent	Southwest Asian countries
<p>Malaysia: Monday - Friday (Kuala Lumpur GMT+8) 9 am – 6 pm* +60 32 300 8777</p> <p><i>*Excluding bank holidays</i></p>	<p>Pakistan: Monday - Friday (Islamabad GMT+5) 9 am – 6 pm* +92 51 209 7400</p> <p><i>*Excluding bank holidays</i></p>

Helpful Links

Name	Website Address
GVERSE Homepage	http://www.gverse.com